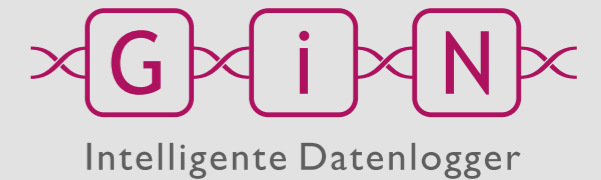


GL2400



Up to 4
CAN^{FD}



The CAN FD Model of the GL2000 Series

The data logger GL2400 encompasses all the benefits of the GL2000 series, in addition to supporting CAN FD. This means that it can record signals of the CAN FD bus system. It supports both the ISO and non-ISO (Bosch) standard.

Because of its compact and robust design, the GL2400 can be installed into any vehicle in a safe and unobtrusive manner. The provided software package is compatible with the complete G.i.N. datalogger family and offers the mighty LTL functionality regarding filtering, triggering and real time data processing.

- › Supports ISO & Non-ISO (Bosch) standard
- › Sending any, freely configurable messages
- › Selective recording (extensive trigger and filter conditions)
- › Full trace recording
- › CCP/XCP on CAN, XCP on CAN FD
- › GPS receiver via serial or via CAN
- › Fast readout of the data
- › Data transmission via USB/LAN and mobile radio

Discover our products online!

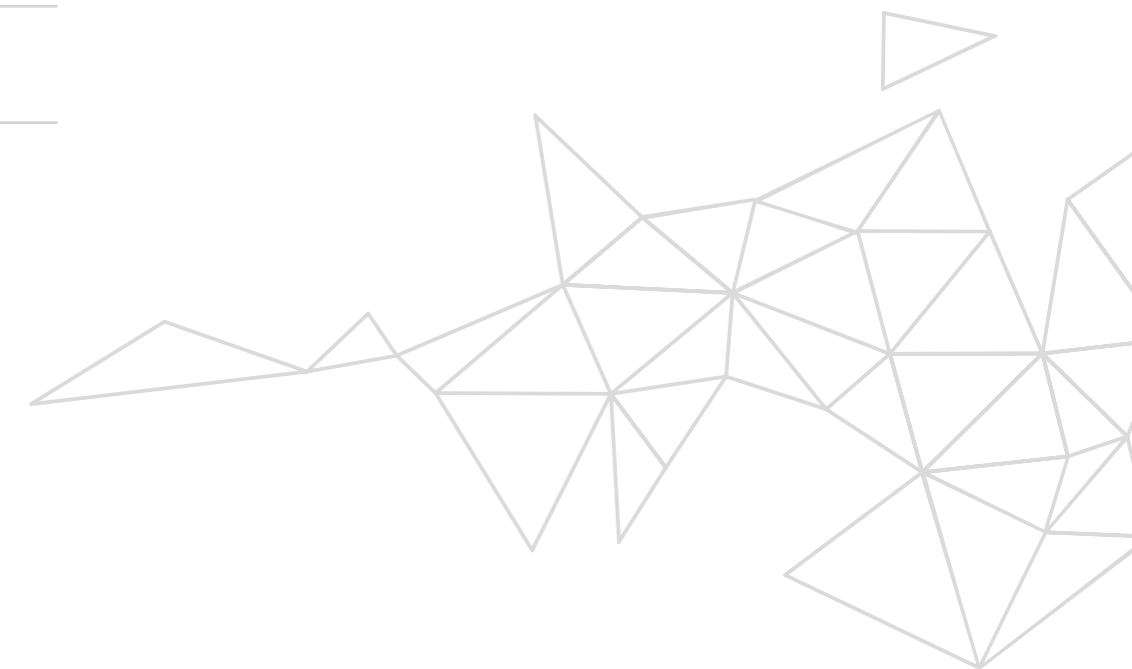


GL2400

Technical Specifications



Interfaces		Technical Data		Housing	
CAN	5 (4 x CAN FD TJA1043TK via GLT baby boards, 1 AUX-CAN with TJA1042)	Operating Voltage	+6 V ... + 30 V	Material	Extruded Sheath: Al Mg Si 0.5 power-coated
LIN	2 (TJA1021)	Power Consumption at 12 V	Typ. 2 W		Die-cast Cover: GD Al Si 12 powder-coated
RS-232	2 (1 freely programmable, 1 GPS recording)	Current Consumption:		Dimensions (LxWxH)	175 x 137 x 35 mm
Digital I/O	4 Digital In 4 Digital Out	• in sleep mode with 4 CAN	Typ. < 1 mA	Weight	~ 580 g
Analog Inputs	4 (0 V ... 18 V, 10 Bit)	• in operation mode	at $U_{Bat} = 6 V$ and 4 x CAN: typ. 342 mA $U_{Bat} = 12 V$ and 4 x CAN: typ. 182 mA $U_{Bat} = 12 V$ and 3 x CAN: typ. 177 mA $U_{Bat} = 12 V$ and 2 x CAN: typ. 172 mA		
USB	1 (type B, USB 2.0)	Operating Temperature Range:	40 °C ... + 80 °C		
Ethernet	1 (10/100 Mbit/s)				
AUX	1 (to connect optional accessories such as LOGview or hand trigger)				
EVENT	1 (to connect the event switch E2T2L)				
Storage Medium	1 Slot for SD/SDHC card				



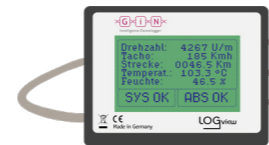
GL2400

Connectivity



CANgps
GPS receiver on CAN
GPS Receiver serial

Page 54/56



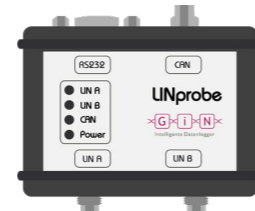
LOGview
External display

Page 42



LTE Router
Mobile data transfer

Page 58



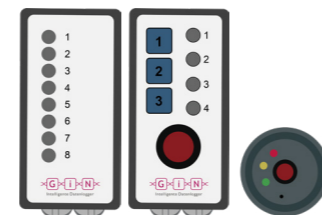
LINprobe
2 x LIN

Page 52



CASM2T3L
Audio recording and triggering

Page 60



**CA8DL/CA4T4DL/
CAS1T3L**
Triggering/monitoring and signaling

Page 60/62

