

# GL1000/GL1010



## Small and Compact

The GL1000 is our smallest data logger, which is characterized by its high storage capacity, easy handling as well as the extensive configuration options.

The GL1000 and its IP-65 protected sibling GL1010 are predestined for use in harsh environment.

Both data loggers have a low power requirement and their technical data make both products very suitable for mobile use – especially for concealed installation.

- CCP/XCP on CAN
- Sending any, freely configurable messages
- Selective recording (extensive trigger and filter conditions)
- Full trace recording
- High storage capacity with easily exchangeable SD card
- Low power consumption

[Discover our products online!](#)

# GL1000/GL1010

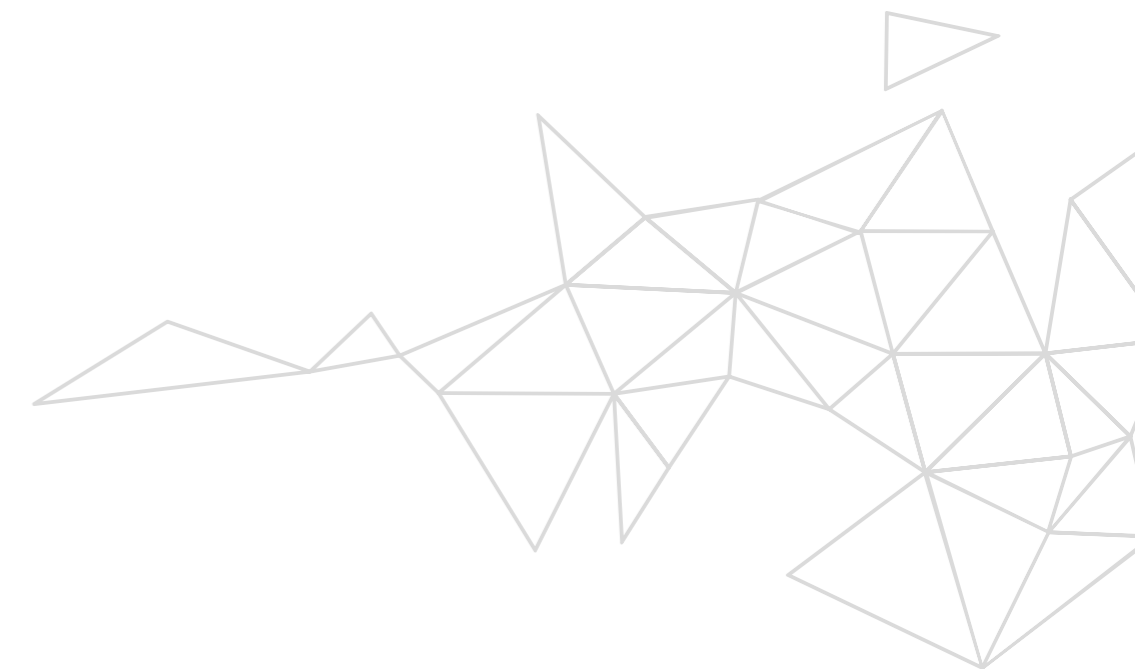
## Technical Specifications



Interfaces	
CAN	2 via Baby Boards
LIN	2 (TJA1021)
RS-232	1 (freely programmable )
Digital I/O	2 Digital In/Out (configurable)
Analog Inputs	4 ( 0 V ... 16 V, 10 Bit)
USB	1 (for configuration and data access, USB 2.0)
Storage Medium	1 Slot for SD/SDHC card

Technical Data	
Operating Voltage	+5 V ... +30 V
Power Consumption	Typ. 780 mW, max. 1.22W
Current Consumption:	Dependant on the operating voltage
• U = 5 V	Typ. 155 mA
• U = 12 V	Typ. 65 mA
• U = 27 V	Typ. 35 mA
Operating Temperature Range:	
• GL1000	-40 °C ... + 85 °C
• GL1010	-20 °C ... + 80 °C

Housing	
Material	Extruded Sheath: Al Mg Si 0.5 powder-coated  Die-cast Cover: GD Al Si 12 powder-coated
Dimensions (LxWxH)	GL1000: 107 x 85 x 35 mm GL1010: 130 x 85 x 35 mm
Weight	GL1000: ~ 230 g GL1010: ~ 300 g



# GL1000/GL1010

## Connectivity



**LOGview**  
External display

Page 42



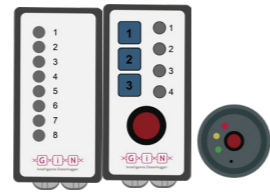
**CANgps**  
GPS receiver on CAN

Page 54



**LINprobe**  
2 x LIN

Page 52



**CA8DL/CA4T4DL/  
CAS1T3L**  
Triggering/monitoring  
and signaling

Page 60/62

